

## **CHAPTER FIVE**

### **5.0. DESIGN IDEAS AND CONCEPT AT DIFFERENT LEVELS OF THE DESIGN PROCESS**

The design of the Christ Apostolic Church Area Headquarters in Kingstep Area, Ilorin West Local Government, will be guided by a deep understanding of the church's mission, values, and community. The design process will involve several levels, each with its unique ideas and concepts.

#### **Site Planning**

At the site planning level, the design will focus on creating a functional and accessible layout that meets the needs of the church community. The site will be designed to accommodate the church building, parking, landscaping, and other essential facilities. The design will also consider the site's topography, climate, and environmental conditions to ensure sustainability and energy efficiency.

#### **Building Design**

The building design will be guided by a modern and functional aesthetic that reflects the church's values and mission. The design will incorporate elements such as natural light, ventilation, and materials that promote sustainability and energy efficiency. The building's façade will be designed to be visually appealing, with a prominent entrance that welcomes visitors and members.

#### **Worship Spaces**

The worship spaces will be designed to create a sense of community and spiritual connection. The design will incorporate elements such as flexible seating arrangements, good acoustics,

and natural light. The worship spaces will also be equipped with modern audio-visual equipment to enhance the worship experience.

### **Community Facilities**

The community facilities will be designed to promote fellowship and socialization among church members. The design will incorporate elements such as meeting rooms, kitchens, and restrooms. The facilities will be designed to be flexible and adaptable to meet the changing needs of the community.

### **Sustainability Features**

The design will incorporate sustainability features such as rainwater harvesting, solar panels, and energy-efficient systems. These features will help to reduce the church's environmental impact and promote sustainability.

### **Cultural and Contextual Considerations**

The design will also consider the cultural and contextual factors of the Kingstep Area, Ilorin West Local Government. The design will be sensitive to the local culture and traditions, and will incorporate elements that reflect the community's values and identity.

## **5.1 TECHNOLOGY AND ENVIRONMENTAL CRITERIA**

The Christ Apostolic Church Area Headquarters will incorporate various technological and environmental criteria to ensure sustainability, efficiency, and effectiveness. The technological criteria will focus on utilizing modern technology to enhance the church's operations, communication, and community engagement.

## **Technological Criteria**

The church will utilize modern technology such as audio-visual equipment, sound systems, and digital displays to enhance worship services and community events. The church will also have a robust IT infrastructure, including computers, software, and internet connectivity, to support administrative tasks, communication, and online engagement. Additionally, the church may consider incorporating digital platforms for online worship services, community engagement, and outreach programs.

## **Environmental Criteria**

The environmental criteria will focus on reducing the church's environmental impact and promoting sustainability. The church will incorporate energy-efficient systems, such as solar panels and LED lighting, to reduce energy consumption. The church will also implement rainwater harvesting and greywater reuse systems to conserve water. Furthermore, the church will prioritize waste reduction and recycling, and will strive to minimize its carbon footprint through sustainable practices.

## **Sustainable Design**

The church's design will incorporate sustainable design principles, such as natural light and ventilation, to reduce the need for artificial lighting and heating and cooling systems. The design will also prioritize the use of sustainable materials, such as locally sourced wood and low-VOC paints, to minimize the church's environmental impact.

## **Energy Efficiency**

The church will prioritize energy efficiency through the use of energy-efficient systems and appliances. The church will also consider incorporating renewable energy sources, such as solar or wind power, to reduce its reliance on non-renewable energy sources.

## **5.2 SERVICES REQUIRED**

The Christ Apostolic Church Area Headquarters will require a range of services to ensure its effective operation and management. These services will include electrical, plumbing, HVAC, IT, and security systems.

### **Electrical Services**

The electrical services will provide power to the building, including lighting, heating, and cooling systems. The electrical system will be designed to be safe, efficient, and reliable, with backup power systems in place to ensure continuity of operations.

### **Plumbing Services**

The plumbing services will provide clean water and sanitation facilities for the building, including sinks, toilets, and showers. The plumbing system will be designed to be efficient and safe, with adequate drainage and waste management systems.

### **HVAC Services**

The HVAC (heating, ventilation, and air conditioning) services will provide a comfortable and healthy indoor environment for occupants. The HVAC system will be designed to be efficient, reliable, and quiet, with adequate ventilation and air filtration systems.

### **IT Services**

The IT services will provide the church with the technology and infrastructure needed to support its operations, including computer systems, internet connectivity, and audio-visual equipment. The IT system will be designed to be secure, reliable, and efficient, with adequate backup systems in place.

## **Security Services**

The security services will provide a safe and secure environment for occupants and assets. The security system will include features such as CCTV cameras, alarms, and access control systems.

## **Other Services**

Other services that may be required for the Christ Apostolic Church Area Headquarters include fire protection systems, audio-visual systems, and communication systems. These services will be designed to support the church's operations and ensure a safe and healthy environment for occupants.

## **5.3. PERFORMANCE STANDARD**

### **5.3.1 LEGAL ISSUES AND PLANNING RELATIONS**

The Christ Apostolic Church Area Headquarters in Kingstep Area, Ilorin West Local Government, must comply with local regulations and laws governing church establishments and land use. Here's an overview of the key considerations:

#### **Land Use and Zoning Regulations**

The church must ensure that the land is zoned for religious or community use. Ilorin West Local Government Area has specific regulations regarding land use, and the church should obtain the necessary permits and approvals from the local authorities.

#### **Building Codes and Permits**

The church's construction plans must meet the building codes and standards set by the Kwara State government. The church should obtain building permits and approvals from the relevant authorities, including the Ilorin West Local Government Area.

## **Registration and Incorporation**

The Christ Apostolic Church Area Headquarters should register with the Corporate Affairs Commission (CAC) and obtain a certificate of incorporation. This will enable the church to own property, enter into contracts, and conduct financial transactions.

## **Tax Exemptions**

As a religious organization, the church may be eligible for tax exemptions. The church should apply for tax-exempt status with the Federal Inland Revenue Service (FIRS) and provide necessary documentation.

## **Planning Relations**

The church should maintain good relations with the local community, including neighboring residents, businesses, and other stakeholders. This can be achieved through community outreach programs, noise management, and other initiatives that promote peaceful coexistence.

## **Compliance with Local Laws**

The church should comply with local laws and regulations, including those related to noise pollution, waste management, and environmental protection. The church should also ensure that its activities do not disturb the peace and tranquility of the surrounding community.

## **Relevant Authorities**

The church should liaise with relevant authorities, including <sup>1</sup>:

- Ilorin West Local Government Area
- Kwara State Ministry of Lands and Housing
- Corporate Affairs Commission (CAC)
- Federal Inland Revenue Service (FIRS)

By complying with these regulations and maintaining good relations with the local community, the Christ Apostolic Church Area Headquarters can operate smoothly and effectively in the Kingstep Area of Ilorin West Local Government.

## **5.4. CONCLUSION AND RECOMMENDATIONS**

### **5.4.1. CONCLUSION**

The proposed Christ Apostolic Church Area Headquarters in Kingstep Area, Ilorin West Local Government, will be a vibrant and dynamic community hub that reflects the church's values and mission. The project will provide a sacred space for worship, fellowship, and community engagement, while also promoting sustainability and environmental responsibility.

#### **Community Impact**

The Christ Apostolic Church Area Headquarters will have a positive impact on the local community, providing a welcoming and inclusive space for people of all ages and backgrounds. The church's programs and activities will promote spiritual growth, community engagement, and social responsibility, while also providing support and resources for those in need.

#### **Sustainable Development**

The project will prioritize sustainable development, incorporating energy-efficient systems, rainwater harvesting, and sustainable materials into the design and construction of the building. This will not only reduce the church's environmental impact but also promote sustainability and environmental responsibility.

## **Conclusion**

In conclusion, the proposed Christ Apostolic Church Area Headquarters in Kingstep Area, Ilorin West Local Government, will be a valuable addition to the local community, providing a sacred space for worship, fellowship, and community engagement. The project's focus on sustainability, community impact, and spiritual growth will make it a model for other churches and community organizations in the area. With careful planning, execution, and community engagement, the Christ Apostolic Church Area Headquarters will be a thriving hub of spiritual activity and community service.

### **5.4.2. JUSTIFICATION BY RESEARCH RESULTS**

Research has shown that community-based initiatives, such as the proposed Christ Apostolic Church Area Headquarters, can have a positive impact on the social and spiritual well-being of individuals and communities. Studies have found that churches and other faith-based organizations play a critical role in promoting community engagement, social cohesion, and spiritual growth.

#### **Community Engagement and Social Cohesion**

Research has shown that community engagement and social cohesion are essential for building strong, resilient communities. The proposed Christ Apostolic Church Area Headquarters will provide a welcoming and inclusive space for community members to come together, build relationships, and engage in activities that promote social cohesion and community development.

#### **Spiritual Growth and Development**

The church will also provide opportunities for spiritual growth and development, including worship services, Bible studies, and other spiritual programs. Research has shown that spiritual



growth and development are essential for individual well-being and can have a positive impact on mental and physical health.

### **Community Impact**

The proposed Christ Apostolic Church Area Headquarters will have a positive impact on the local community, providing a range of benefits, including:

- Increased community engagement and social cohesion
- Opportunities for spiritual growth and development
- Support for vulnerable populations, such as the poor and the elderly
- Promotion of moral values and principles

### **Research-Based Design**

The design of the church will be informed by research on sustainable design, community engagement, and spiritual growth. The building will be designed to be energy-efficient, sustainable, and accessible, with features such as natural light, ventilation, and sustainable materials.

In conclusion, the proposed Christ Apostolic Church Area Headquarters is justified by research results that demonstrate the positive impact of community-based initiatives on social and spiritual well-being. The church will provide a welcoming and inclusive space for community members to come together, engage in activities that promote social cohesion and community development, and pursue spiritual growth and development.

### **5.4.3. RECOMMENDATION FOR FUTURE RESEARCH**

Future research on the Christ Apostolic Church Area Headquarters could explore various aspects of the church's impact on the community, its sustainability, and its role in promoting spiritual growth and development. Here are some potential areas of research:

#### **Community Impact**

Research could investigate the impact of the church on the local community, including its role in promoting social cohesion, community engagement, and support for vulnerable populations. Studies could examine the church's outreach programs, community services, and partnerships with other organizations.

#### **Sustainability**

Future research could explore the church's sustainability practices, including its energy efficiency, waste management, and environmental stewardship. Studies could investigate the effectiveness of the church's sustainability initiatives and identify opportunities for improvement.

#### **Spiritual Growth and Development**

Research could investigate the impact of the church's spiritual programs and activities on the spiritual growth and development of its members. Studies could examine the effectiveness of the church's discipleship programs, worship services, and other spiritual initiatives.

#### **Leadership and Governance**

Future research could explore the leadership and governance structures of the church, including its decision-making processes, leadership development, and accountability mechanisms. Studies could investigate the effectiveness of the church's leadership and governance structures in promoting the church's mission and values.

## **Comparative Studies**

Comparative studies could be conducted to compare the Christ Apostolic Church Area Headquarters with other churches or community organizations in terms of its impact, sustainability, and spiritual growth and development. This could provide valuable insights into best practices and areas for improvement.

By exploring these areas of research, future studies could provide valuable insights into the impact and effectiveness of the Christ Apostolic Church Area Headquarters and inform strategies for improvement and growth.

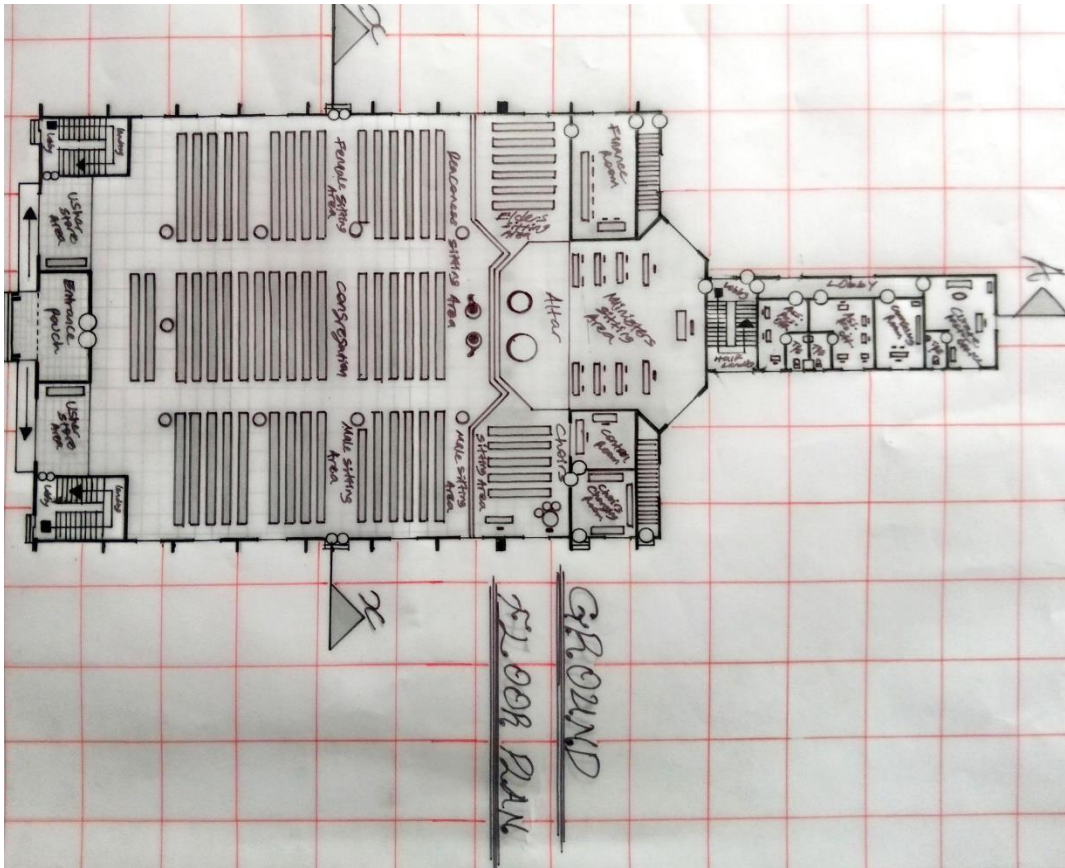
## REFERENCES

- Adeboye, O. (2012). The Pentecostal Revolution in Nigeria. *Journal of African Christian Thought*.
- Adebayo, A. (2019). Challenges facing the Christ Apostolic Church in Nigeria. *Journal of Church and State*.
- Adeyemi, S. (2015). The history of the Christ Apostolic Church. Lagos: CAC Publishing House.
- Adeyemi, S. (2020). Strategic planning for church growth and development. *Journal of Church Administration*.
- Adeyemo.T. (2006). African Christianity: The Story of the Christ Apostolic Church. African Books Collective.
- Afolayan, M. (2018). The Role of the Church in Community Development. *Journal of Community Development*.
- CAC Constitution. (2020). Christ Apostolic Church Constitution.
- CAC Leadership Handbook. (2019). Christ Apostolic Church Leadership Handbook.
- Fatokun, S. (2016). The Christ Apostolic Church and community development in Nigeria. *Journal of Community Development*.
- Ojo, M. (2017). The growth and development of the Christ Apostolic Church. *Journal of Church and Society*.
- Ojo, M. A. (2006). The End-Time Army: Christ Apostolic Church Prophetic Ministry. African Journals Online.

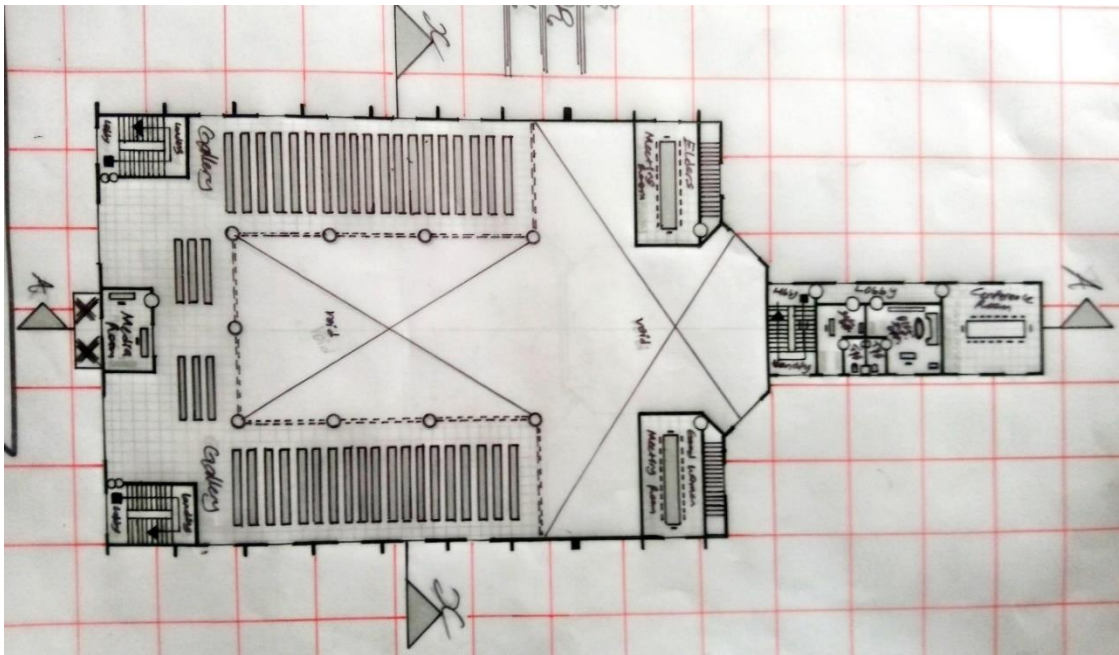
Olowola, C. (2018). Community engagement and partnership in church ministry. *Journal of Church and Community*.

Omoyajowo, A. (2008). *The Cherubim and Seraphim: The History of an African Independent Church*. Lagos: Atlantic Books.

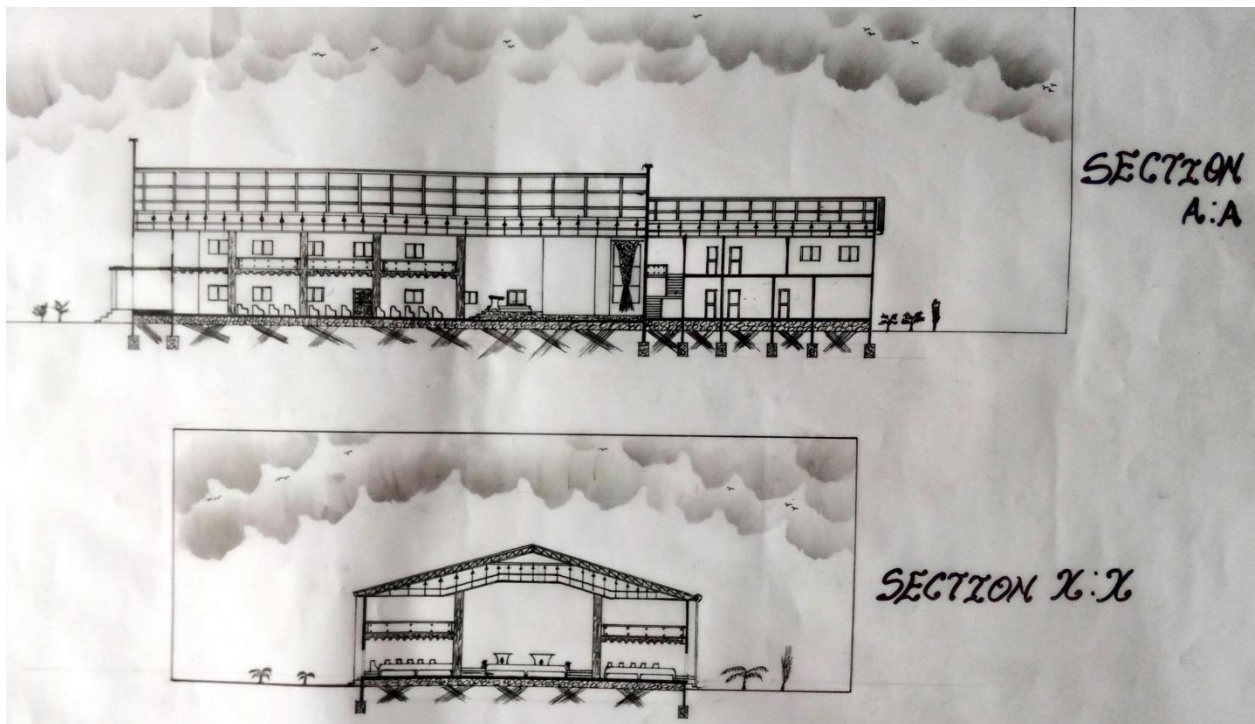
## APPENDIX



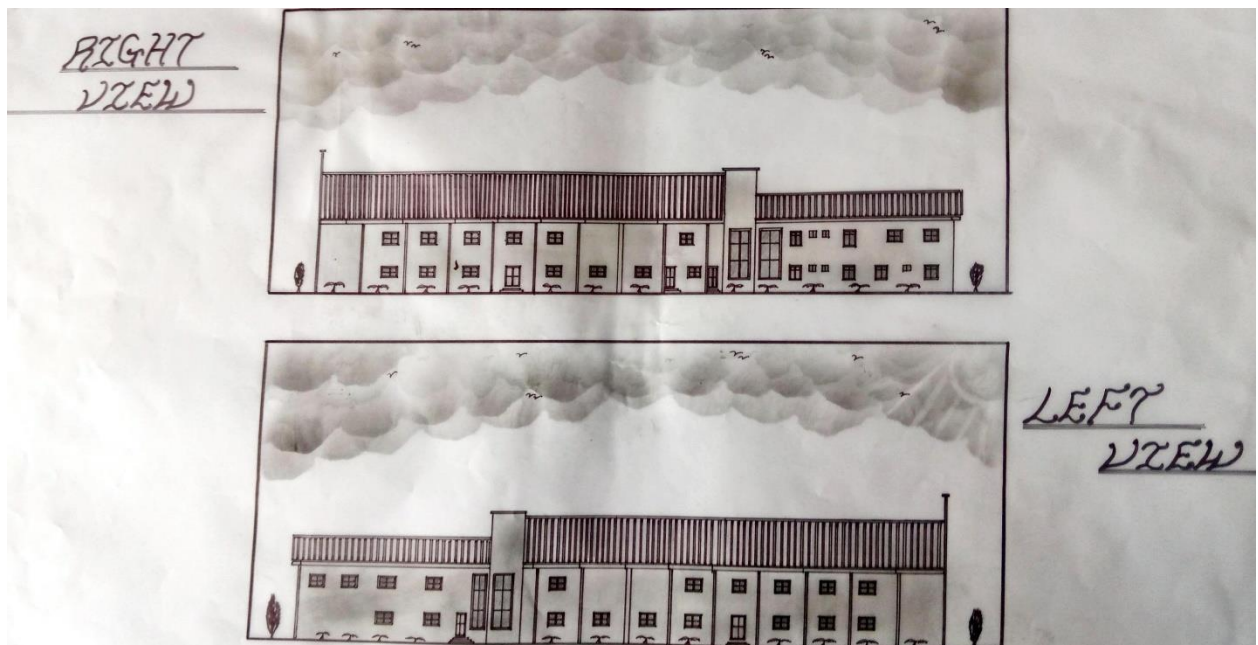
## GROUND FLOOR PLAN



## SECTIONAL DRAWINGS



## ELEVATION

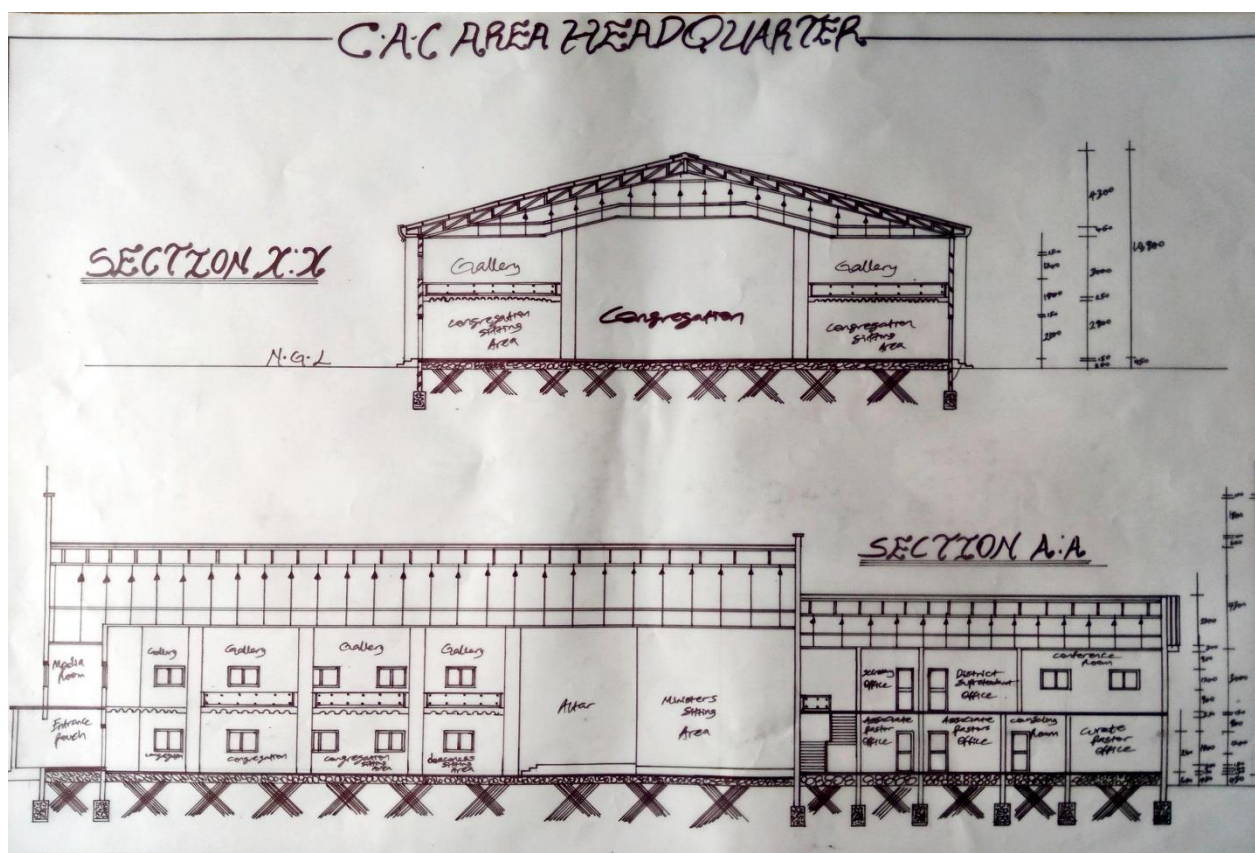




## ELEVATION

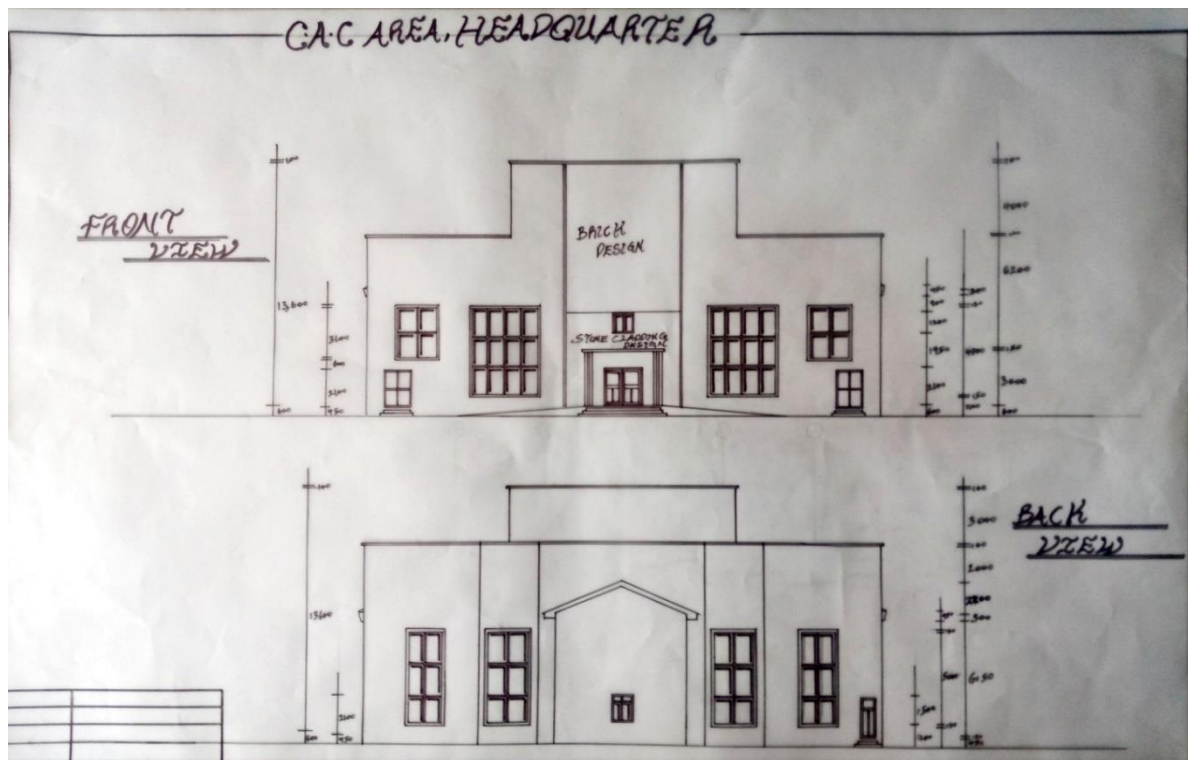


## WORKING DRAWING SECTION

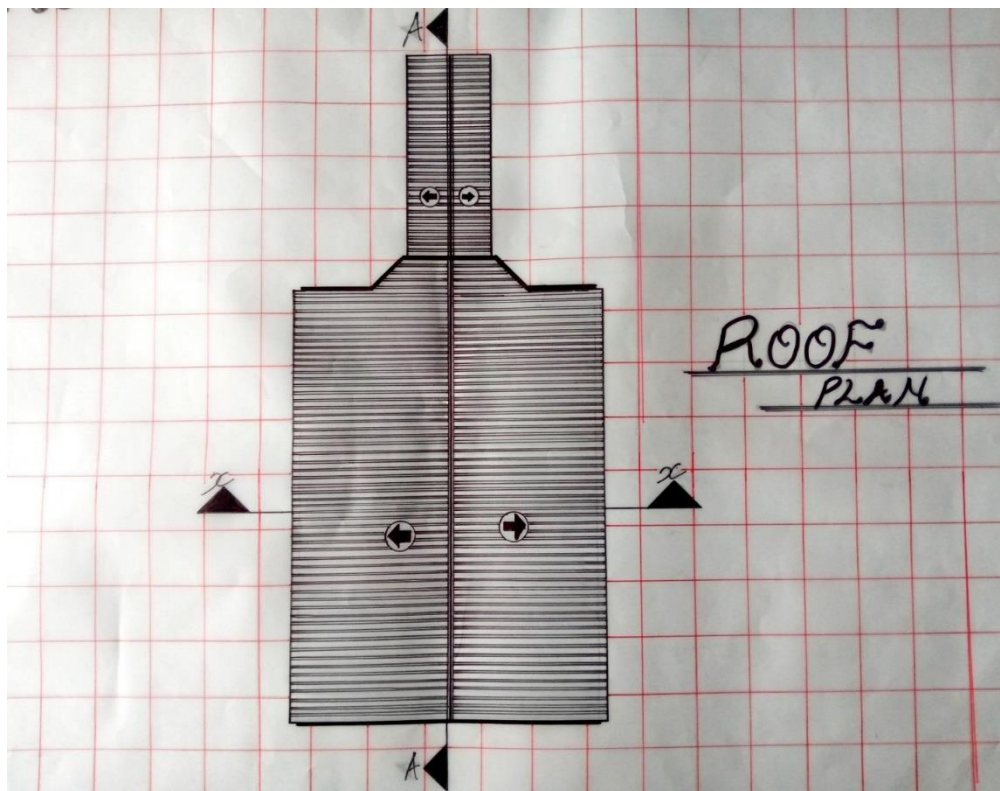




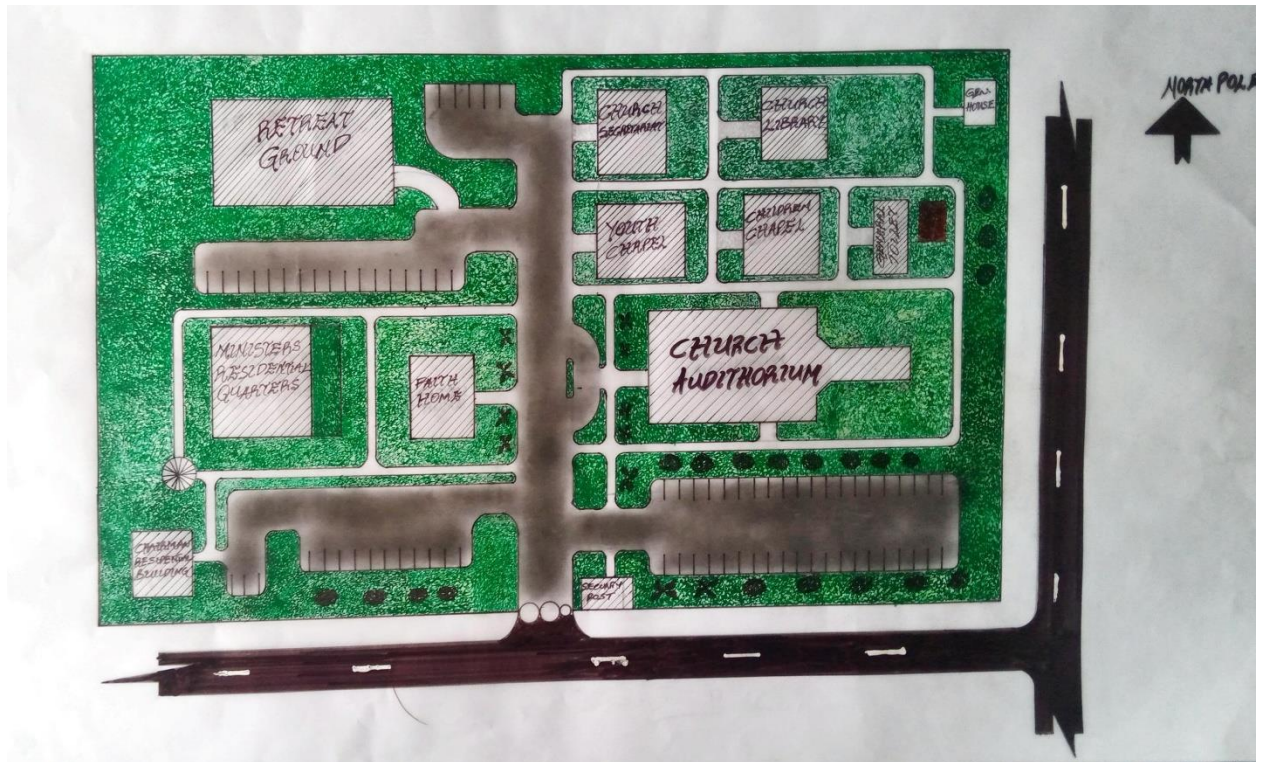
## WORKING DRAWING ELEVATION



## ROOF PLAN



## SITE PLAN



## EXTERNAL PERSPECTIVE

