



**A**  
**TECHNICAL REPORT ON**

**STUDENTS INDUSTRIAL WORK EXPERIENCE SCHEME  
(S.I.W.E.S)**

**HELD AT**

**KENBRAM BUSINESS VENTURES**

**YLGS8 YANKARI MARKET ADJACENT MOTION GROUND KWARA STATE POLYTECHNIC/72  
SABOLINE ISALE AMINLEGBE, ILORIN KWARA STATE**

**BY**

**OLORUNTOMI FAHAD OKIKIOLA**  
**ND/20/COM/PT/0156**

**SUBMITTED TO THE**

**DEPARTMENT OF COMPUTER SCIENCE, INSTITUTE OF  
INFORMATION AND COMMUNICATION TECHNOLOGY,  
KWARA STATE POLYTECHNIC, ILORIN.**

**IN PARTIAL FULFILMENT OF THE REQUIREMENT FOR  
THE AWARD OF NATIONAL DIPLOMA IN COMPUTER  
SCIENCE**

**SEPTEMBER- DECEMBER 2024**

## **DEDICATION**

This report is dedicated to Almighty Allah for giving me wisdom, knowledge and understanding through the course of study.

It is equally dedicated to my loving parents Mr. and Mrs. Oguntomi for their moral and financial support and my siblings.

## **ACKNOWLEDGEMENT**

I acknowledge this report to those who by one way or the other contributed immensely to the successful of my Industrial Training program.

My first profound gratitude goes to Almighty Allah for his showers of blessing and protection on me throughout the period of training.

I am indebted to my parent, Mr. and Mrs. Oguntomi, and my Siblings for their moral and financial assistance at all time.

Lastly I Appreciate the effort of Kenbram Business Venture on the siwes program

## TABLE OF CONTENTS

Title page	i
Dedication	ii
Acknowledgement	iii
Table of Content	iv
<b>CHAPTER ONE</b>	
1.1 Introduction	1
1.2 Definition of Siwes	1
1.3 Aim and Objectives	1
<b>CHAPTER TWO</b>	
2.1 Historical Background of the organization	3
2.2 Organogram of Kenbram Business Ventures	3
2.3 Major activities of the Organization	3
2.4 Section/unit of the organization and their specific function	4
<b>CHAPTER THREE</b>	
3.1 Student specific involvement at the various section/unit	5
<b>CHAPTER FOUR</b>	
4.1 Relevant Experience Gained by student to it field of study	14
4.2 Interpersonal relationship with the Organization	14
<b>CHAPTER FIVE</b>	
5.1 Conclusion	15
5.2 Personal impression about the organization	15
5.3 Recommendation to the Organization	15
5.4 Polytechnic Concerning the Siwes	15

## **CHAPTER ONE**

### **1.1 Introduction**

In achieving best knowledge, there is need to put whatever that have been acquired theoretically into practices.

### **1.2 Definition of Siwes**

The student industrial work experience scheme (SIWES) is the accepted skill training programme which form part of the diploma and approval minimum academic standard and degree course to environmental engineering technology and other professional programme at the Nigeria tertiary institution. It is aimed at exposing student to equipment, knowledge and work industries and also to offer students the opportunity to practices the knowledge acquired in the class for the better job opportunities and challenges ahead.

Hence the student industrial work experience work scheme (SIWES) enable the student to get more experience in regards to their field, for the purpose of better comprehension of this technical report, vital aspect are practically elaborated under topics and subtopics as acquired in the period of the training.

### **1.3 Aim of Students Work Experiences Scheme**

- a. To expose students in tertiary institution to work for methods and technology in handling the equipment and machinery that may not be available in the institution
- b. The training helps the industries influence the training given to the future generation of employees.
- c. The training helps the institution to have a balanced assessment of trainees.
- d. The training develops the practical and communication skills of the participating student.
- e. The training helps the industry/organisation know the future skills available.

## **Objectives of Siwes**

- To provide the students to acquire industrial skill and experience in their various course of study.
- To provide students with the opportunity to apply their theoretical knowledge in practical working constitutions there by bringing the gap between lecture norms and actual site of practical.
- To provide cordial relationship between students from various tertiary institution. Participation in SIWES is a necessary pre-condition for the award of Diploma and Degree certificates in specific displines in most institution of higher learning in the country, in accordance with the education policy of Government.

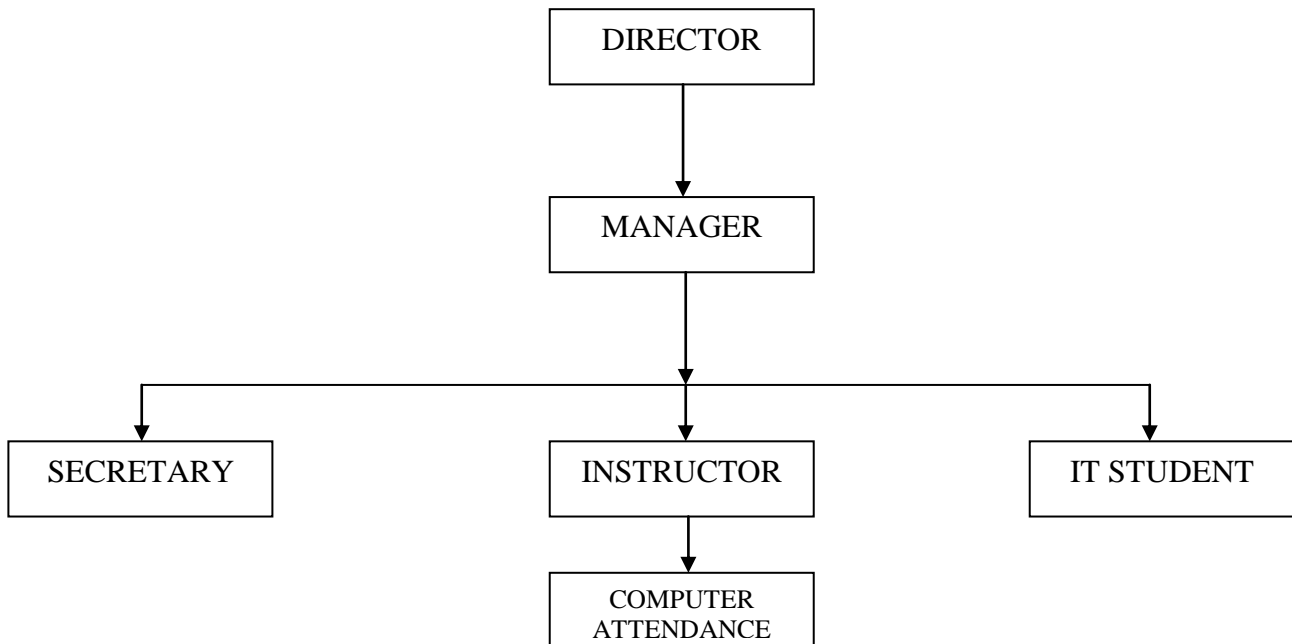
## CHAPTER TWO

### 2.1 Historical Background of the Company

The company Kenbram Cafe was established in the year 2000, it is situated at 24, Onadeko Street Surulere, Lagos State. Then open the branch office in Kwara State Polytechnic in the year 2013 and later change the company name to Kenbram Business Ventures when trying to get the Corporate Affairs Commission registration number **BN3233240**

**Kenbram Business Ventures** was established to enhance the literacy among student in diverse ways. The company have tried its best in education up to 600 students since it inception (12) years ago and it is still struggling to increase the number of students before the year runs out.

### 2.2 Organogram of Kenbram Business Ventures



### 2.3 Major Activities of the Organization

- i. Printing and publishing
- ii. Computer Training
- iii. Business Centre
- iv. Computer Maintenance

## **2.4 Section of the Establishment and their Specification**

### **2.4.1 Printing and Publishing**

This section of the establishment deals with the work of printing and publishing of text-books, novels, handouts, slovenlier and other related aspects of printing and publishing.

### **2.4.2 Computer Training**

This unit of the establishment tackles the aspects of training student in computer packages varying from MS Word, MS Excel, Power Point, Adobe, Page Maker, Adobe Photoshop, Corel Draw in particular and other package. The establishment laid emphasis in the aspect of Corel Draw because of its uses and its relationship with the printing and publishing section.

### **2.4.3 Business Centre**

This sector deals with the Business transaction pertaining to Computer section. This unit deals with graphic design as its major area of concentration of the Business centre. Other transaction that took place at the section includes; Scanning, Colour printing, Typing and Desktop publishing.

### **2.4.4 Computer Maintenance**

This section deals with the maintenance and engineering aspects of the establishment.



## CHAPTER THREE

### 3.1 Student's Specific Involvement at Various Sections

My involvement is based on computer packages which includes; Microsoft word and excel to mention a few.

#### Starting Ms-Word for Windows

Before MS-word packages can be used on the computer systems, it must be properly installed on the operating system. The following steps are required to activate MS-Word.

- Step 1: Boot the System
- Step 2: Click start button (or press windows button on keyboard)
- Step 3: Click on program (to display the program submenus)
- Step 4: Point to MS\_Word and click it.

Or simply double click "MS-Word Icon" on desktop.

#### Elements of Ms-Word Screen

- ❖ **Title bar:** This is the upper-most part of the entire MS-word window. It displays the name of the document currently edited. By default, it is usually document 1 for the blank page since the document has not yet saved with any name. At the right end of the title bar are the minimize, maximized and the close button.
- ❖ **Menu Bar:** It is located directly below the title bar. It contains the operation that can be performed in MS\_Word and is presented as menu list. Each menu consist of a list of submenus. Ms\_word menu consist of the following options:
  - i. **File:** it contains any file operations like open, save, save as, close, exit e.t.c.
  - ii. **Edit:** It provides the editing operations like copy, cut paste, undo, find etc.
  - iii. **View:** Can be used for changing how MS\_Word window displays and also to show or hide some components.
  - iv. **Insert:** To insert objects like picture, date and time, page number etc.
  - v. **Format:** It can be used to format the document like font, paragraph, change case etc.
  - vi. **Table:** To insert table, draw table and format the table

- vii. **Tools:** it is used to change words settings like spelling, mail merging and envelop printing.
- viii. **Windows:** It can be used to switch in between a list of opened documents.
- ix. **Help:** to have an in-depth knowledge on how to use MS-Word.
  - ❖ **Tool Bars:** This contains a list of beautifully designed diagrams that illustrate the actions they perform. It includes standard toolbar, formatting toolbar etc.
  - ❖ **Standard Toolbar:** It contains button that can be selected to perform commonly needed tasks such as opening, creating, cut, copy, drawing etc
  - ❖ **Formatting Toolbar:** This contains button that enables common formatting tasks like font's type, font size, bold, italics, underline, alignment, font-colour etc.
  - ❖ **Drawing Toolbar:** It is always at the bottom of the screen and is recognized with features like undo text, pictures, words art etc.
  - ❖ **Rulers:** These are the horizontal and vertical rulers for measuring. It also controls margins, indents and tab stops.
  - ❖ **Scroll Bar:** This is used to move around the document to either up, down, left or right with ease.
  - ❖ **Work area:** This is the area where the document appears. It occupies the central part of the word window.

**Status Line:** It contains information about document being edited. This shows the current page, total number of pages in the document, sections number, default paragraph, cursor position etc.

Microsoft word is an example of word processing package, it is used to type and edit texts.

### **How to Launch into Microsoft Word Environment**

1. Click on start button
2. Point to programs
3. Click on Microsoft word

### **To Save Document**

1. Click on file menu

2. Click on save as
3. Type the name you want to save with
4. Click on save

### **To Bold a Text**

1. To highlight the text to bold
2. Click format
3. Click font
4. Click on bold

### **To Underline a Text**

1. Highlight the text
2. Click on format
3. Click on font
4. Click on underline

### **To Create a New File**

1. Click on file menu
2. Click on new

### **To Italics a Text**

1. Highlight the text
2. Click on format
3. Click on font
4. Click on italics

**Microsoft Word:** gives room for checking spellings, changing the font size of texts, inserting pictures e.t.c. to mention a few.

### **In Summary of the Experience Gained**

1. I learnt how to type faster
2. I learnt how to make use of the printer
3. I learnt different shortcuts keys in MS Word
4. I learnt the various functions of the formatting menu, edit menu, file menu, as related to MS word, to mention a few.

## **Corel Draw**

Corel Draw is a application software that belongs to a group called graphic application. It is an essential tool in creating a class document/graphic with the ability to apply special effect and fills, document (graphical are designed in a neat and more composed style). Corel Draw Graphical uses extension (CDR) for all its associated files and (BAK) for an automatic back-up of Corel Draw files.

There are also different type of Corel Draw some of which include; Corel 9, Corel 10, Corel 11, Corel 12, and Corel X3 which is the latest version of Corel Draw.

### **Some Features of Corel Draw**

The features of Corel Draw are the tools used in performing graphical function in Corel. Some of which includes;

**Title Bar:** It displays the title of the current application program. It also display the name of the current file and to minimize, restore and close icon button.

**Menu Bar:** The menu bar displays the menu that contains all the series command that is use in performing, creating, formatting and editing graphics.

**Tool Bar:** The tool bar is the major type of tool use in creating professional art work. It comprises of standard tool bar and property tool bar.

**Tool Bar:** The tool bar in Corel Draw contain different tools some of which includes pick tool, share tool, zoom tool, pencil tool, rectangle tool, circle tool.

### **Starting Corel Draw**

- Click on start on the screen
- Select program from the menu being display
- Click on current graphics suit folder
- Click on the version of Corel Draw

**Note:** The difference between the versions of Corel Draw is some additional features and tools.

### **What Corel Draw will First Display**

1. **New Graphic:** This is used to start a new graphical publication in Corel Draw.

2. **Open Last Edited:** This will automatically open the last graphic file that is being operated on, before the program is closed.
3. **Open Graphic:** this will display list of files that are being save on system in Corel Draw, in which you can click on one that you want to operte on, and click on opens
4. **Template:** this Will open some graphic design that are being save on the version on the Corel draw by the manufacturer which can use in designing
5. **Corel Tutor:** The option will display an existing write ups that are capable of teaching you how about to go about in Corel draw
6. **What's New:** This option will likewise display the feature tht makes the version of Corel draw you are working on to be different from other version.

### **Object on Toolbox**

- a) To pick: This looks like the normal mouse pointer and it is black on default. It is used to pick and select object.
- b) Shape tool: as the same implies, it is used in shaping object or form a perfect curve or special bent.
- c) Zoom Tool: this is used to pub the zoom tool bar, this can be use to zoom in or out of the printable page.
- d) Free-hande: this is used in drawing free form object. other tools under it are; Bezier, artistic media, dimension connector and interactive connector.
- e) Rectangle tool: this is used in drawing rectangle and square easily.
- f) Eclipse tool: this tool is used in drawing circles of different shape and size without stress.
- g) Interactive fill tool: this is used in applying special fill effects like shadow of different forms in application.
- h) Outline tool: this is used for creating and assigning outlines of an object.
- i) Color fill: this tool is used for filling object with different color pattern and texture.

## **Working on Corel Draw**

### **1. Saving File:**

- a) Click on file from the menu bar
- b) Click on save as
- c) Type the name you want to use in saving the document on the dialog box being displayed.
- d) Click on save.

### **2. Opening and Existing Document**

Press CTRL+O on the keyboard

- a) Search for the name used in saving the document from the dialog box being displayed.
- b) Click on the file and click on open.

### **2 Importing a File**

- a) Click on file
- b) Select import from the menu you want to import
- c) Locate the file or the object you want to import
- d) Click on the object and click on import

### **4. Exporting Files**

- a) Click on file
- b) Select export
- c) Select a location to save the exported file.
- d) Type a file name to be exported
- e) Click on export and follow the instruction that will be displayed after

### **5. Undo, Redo and Repeat**

These are task that is being created by mistake can be undo, redo and repeated

- a) Click on edit
- b) Select undo (ctrl+shift+z) or
- c) Select repeat(ctrl+r)

## **6. Dropping a Gap**

- a) Type the text to be formatted in the f8 typing border
- b) Select the paragraph you want to edit
- c) Press (ctrl t) on the keyboard
- d) Click on effect from the dialog box being displayed
- e) Under the effect click on effect type
- f) Then click on dropping cap
- g) Click on apply and then click ok

## **7. Drawing and Arc/Sector**

- a) Select the ellipse tool (f7)
- b) Draw an ellipse
- c) Select the shape
- d) Point to the node, click and drag to an arc/sector

## **8. Duplicating of an Object**

- a) Select the object
- b) Select duplication
- c) Drag the duplicated object to its desired position

## **9. Skewing**

- \* Click on the object twice to bring the skewing and rotate node
- \* Point to any of the middle node
- \* Click on up/down for vertical skewing or right/left for horizontal skewing.

## **10. Cloning Object**

- \* Select the object to be cloned
- \* Click on Edit
- \* Select clone
- \* Drag the clone to a new location

**Note:** In case of any change on the original objects, the changes will automatically be applied to the clone one.

## **11. Switching Page Orientation**

- \* Click on layout
- \* Select switch page orientation  
(Its function is to change the current setting of a page and there is only two ways of doing it, it is either in landscape or portrait).

## **12. Inserting page**

- \* Click on layout
- \* Select Insert page
- \* Specify the number of page(s) to be inserted
- \* Specify whether it should be before or after the current page
- \* Select an oriented form (Landscape or portrait)
- \* Select a paper size (A4, A3, Letter and Custom)
- \* Specify the width and the height value for the customized paper
- \* Click OK

## **13. Grouping Object (CTRL + G)**

- \* Select two or more object
- \* Click on Arrange
- \* Select Group

## **14. Ungrouping Object (CTRL+L)**

- \* Click on the grouped object
- \* Click on Arrange
- \* Select Ungroup

## **15. Combining Object (CTRL + L)**

- \* Select two or more different objects
- \* Click on Arrange
- \* Select Combine

## **16. Separating Object (CTRL + K)**

- \* Click on the combine object/text
- \* Click on Arrange



- \* Select Break Apart

## **17. Bitmapping in CorelDraw**

- \* Select the object or picture you want to bitmap
- \* Click on Bitmap
- \* Select convert to bitmap
- \* Click on the option of the bitmap either Grayscale (Black or White), RCG (Red, Green, Blue) or CMYB (Cyan, Magenta, Yellow, Black) and click on OK.

### **A Simple Design in Corel Draw**

#### **Drawing of MTN Logo**

- Using the tool to draw a square of equal length and breadth
- Place it on the printable area on your document
- Fill the square with Yellow color
- Use the eclipse tool to draw an eclipse inside the square that is first drawn.
- Fill the Eclipse with royal blue colour (100%, Red & 100% Blue)
- Use the text tool to write MTN inside the Eclipse
- Break the text using CTRL + K
- Give the M & N of the text white color
- The remaining letter T fills it with Yellow color
- At the lowest part of the letter T, use the rectangle tool to draw a small square and place it at the bottom of the letter T giving the square a Fire Red Color (100% Magenta and 100% Yellow)
- Group the logo together using CTRL + G and save it as MTN logo.

## **CHAPTER FOUR**

### **4.1 Relevance of Experience Gained to Students Field of Study**

The establishment of Kenbram Business Ventures has improve my knowledge in a standardize way in most aspect that is not very clear to me before. After the Siwes program, I gained how to operate in CorelDraw and a bit experience on how to operate on MS\_excel e.t.v

I can also say, I am an aspect of CorelDraw because my graphical sensitive has improved a lot since the conclusion of the program.

Furthermore, I was introduced to other section of the company, I was taught how to do minor installation on a computer system and how a computer system can be maintain day to day.

In a general term, my level of understanding in computer is greatly improved.

### **4.2 Interpersonal Relationship with the Organization**

During all my period at Kenbram Business Ventures, I enjoy every bit of it till the last hour of my departure as a SIWES student.

Starting with the Chief Executive Officer (CEO) to the secretary shows us all the love and care parent gave to their siblings.

My cordial relationship with the instructor in my section helps a lot in the sense that, he never relent in attending to me both the theoretically and the practically. The company is so interesting to the extent of nicknaming themselves with quarrel.

## **CHAPTER FIVE**

### **5.0 Conclusion**

Even though there was a little hardship especially when the work of the organization is piled up on me and payment was very meager for transportation.

The Siwes program at the organization, give me a wonderful and everlasting experience. The program as readily helped to bridge the gap between the theoretical aspect and the aspect of the practical experienced in the industrial training.

### **5.1 Personal Impression about the Organization**

The organization has the potential do increase within hundred times. There is also even tendency that way other standard undergoing Siwes would want to choose the form in future.

The polytechnic is well respected because of integrity in the academic field and that has shown in the respect organization here for her student. The organization should however encourage the industrial training (IT) student with payment since they constitute their work force. In this part of the school they should prepared for student industrial funds on time.

### **5.2 Recommendation to the Organization**

Since the computer usage cannot be overemphasized, in all aspects in the recent time, I therefore think it is standard enough for any student of computer science to seek for a place for his or her industrial attachment to acquire maximum practical experience to back up the theoretical aspect that he or she might have learnt.

### **5.3 Polytechnic Concerning the Siwes**

There is every tendency for student (IT) to have more knowledge about their field of study thus, preparing them for the future and enabling the students to determine to succeed in their chosen field of study, so I enjoin the polytechnic to continue the Siwes program and not allow it to go into extinction. Also, the supervision of the student in the place of attachment should materialize.